



OUR COVID CHALLENGE

As I write this article, further restrictions have been imposed due to the Covid-19 pandemic. Like you, I am frustrated at the inevitability of a second wave of the virus despite our collective efforts and sacrifices as we followed the government guidance.

So, it is with disappointment that Wickersley Parish Council is cancelling both the Lantern Walk and the Lights Switch On event. Both are popular events with thousands attending the Switch On and nearly a hundred coming to the Lantern Walk, but new restrictions make it impossible to hold either of these events.

However, the Parish has challenged itself to replace every cancelled event with another which can be done at home, in gardens, in windows and even on the roundabout!

To this aim we have improved our other forms of communication. We have a 'brand new' Website, with lots of new information and a section on the history of Wickersley which will make your local walks even more interesting. There is a fantastic A-Z of services to enable you to quickly find 'who to go to for what'!

Our new Parish Facebook page is also there for you to share photographs and news and for those of you that don't have access to a computer or smart phone then we hope this newsletter and the notice boards around the parish will be helpful.



The first replacement event is our 'Garden Scarecrow Challenge' just in time for the half term holidays! Collect one of our bags of straw and get busy making a traditional scarecrow or maybe give your scarecrow a modern interpretation. This is an event for the whole family and it would be great if you could share your photographs on our Facebook page. I can't wait to see what you come with! I know you will surprise me with your imagination and clever crafty ideas.

Its not long now to Halloween either. We have put together some helpful hints for a 'Happy Halloween at Home', and there will be more ideas for activities etc on our Facebook page. Photos of you all dressed up as witches, ghosts and all things gruesome will be great to receive!

We all need something to look forward to and something to brighten up the winter days and I know how much everyone appreciates the Parish Christmas Lights. So, let me reassure you, that the Wickersley Lights WILL go on over the weekend of 21st / 22nd November. And, while you may not be ready to trim up inside it would be great if you could join us and bring down a garland of lights from the loft or the garage to decorate a bush or plant in your front garden. How great it would be to have a 'pop of rainbow coloured lights' on every street in Wickersley!

Further details on how to get involved in these events are outlined later in this newsletter.

It is important that as a community we rise to the challenge of the corona virus. That we look after ourselves and each other, that we keep talking to and helping our neighbours and the people in the street that we got to know at our VE garden parties and during the beginning of lockdown when we all clapped for our keyworkers. So, whilst things are different, we will get through it together and I hope you agree that there is plenty of fun to be had in the coming months.

Sue Ellis, Chair of Wickersley Parish Council



**Read more about the
new play areas in
Wickersley Park on the
Back Page**



Getting in touch and staying in touch

One thing we have all learned during the last six months is the importance of good communication. We've taken the opportunity during 'Lockdown' to work on a brand new Parish website which is now 'LIVE'; launch a Parish Facebook page which already has over 600 followers, and look more broadly at all the ways we communicate with you as local residents and how you can get in touch with us.

Our new website has a range of features which we hope will be helpful.

- There is information about Parish and Parish Committee meetings – dates, agendas, minutes etc – details about your Parish Councillors, Parish Finances and lots of documents and information to aid the understanding of how the Parish works;
- The Planning pages explain the planning process and particularly how to object to or support a planning application. You'll also be able to see the representations the Parish has made on your behalf to recent applications;
- The A-Z section is a fantastic tool to quickly find out who and where to go for solutions and help on a whole range of issues;
- In the Events section you can look back at some of the 'virtual' events the Parish has led during Lockdown
- The Local History pages have been developed and we hope local residents will help us build and develop this on-line record – if you have any photos or stories to share we'd be pleased to learn about them!
- The Community Centre pages tell you all about this great facility in the centre of our village – with all the details and how to hire it.
- Access to this, and previous newsletters are available to read on our new website.

Do have a look – www.wickersleypc.org.uk

Contacting the Parish Council

Postal address 286 Bawtry Road,
Wickersley,

Rotherham, S66 1JJ

Tel 01709 703270

Email clerk@wickersleypc.org.uk

Website www.wickersleypc.org.uk

Facebook [@WickersleyParishCouncil](https://www.facebook.com/WickersleyParishCouncil)



There are also 9 noticeboards around the village – the one outside the Community Centre being the one where key Parish information is posted with new leaflets racks attached to the three main noticeboards in the centre of Wickersley, for the distribution of key printed information.

Events Committee

Just when we thought we had turned a corner new restrictions were imposed on our lives. Therefore, it is with regret that the Parish has made the very difficult decision to cancel the lantern walk and the Christmas Lights switch on.

Fear not, we are not going to give up that easily! Our handy hints on a Happy Halloween on page 5 will ensure you can carve out your scary pumpkin to display at home, join in with the quiz and generally have a spooky time. Not only that, you can get involved in creating your very own scarecrow. The Parish will be organising a bountiful supply of straw that can be collected from the carpark in Wickersley Park (site of former Parish Council Office) on the weekend of **24th and 25th October**, between the hours



of **11am and 1pm**, and also on **Monday 26th October 11am till 1pm**. Bring a bag or container to take home your straw. Stuff your scarecrow and display with pride. You don't have to go scary, you can follow your favourite theme, or even go retro with Wurzel Gumidge.

Christmas Lights WILL still shine this year! Our Sparkling Rainbow Christmas Lights will light up Wickersley for the first time on the weekend of **21st/22nd November**.

Why stop there let's light up the whole of Wickersley. Wouldn't it be great if everyone put up some lights or illuminated decorations so that our whole village can sparkle and twinkle to cheer us all along!!

Cllr. Pat Beighton



Cllr John Barber

*Vice-Chairperson (Parish Council),
Chairperson, Finance Committee*

Cllr Andrew Bates

Recreation Grounds, Wickersley Park Committee

Cllr Pat Beighton

Chairperson, Environment Committee

Cllr Emma Boswell

Chairperson, Winthrop Gardens

Cllr Alan Gibson

Composition of Wickersley Parish Council

Cllr Maggie Godfrey *Chairperson,
Planning Committee & Neighbourhood Plan*

Cllr Christine Grimes

Cllr Sue Horsfield

Cllr Naveen Judah

Cllr Barbara McNeely

Cllr Trevor Nurse

Cllr Kim Phillips

*Chairperson of Wickersley
Community Centre Association*

Cllr Ronnie Postlethwaite

Cllr Mark Scott

Cllr Peter Thirlwall *Chairperson HR*

Clerk Carol J Lavell, CILCA

clerk@wickersleypc.org.uk

Contact: Wickersley Parish Council

Wickersley Community Centre

01709 703270

**The next council meeting will take place on Monday 16th November 2020 at 6:30pm.
Please contact the clerk if you wish to attend the virtual meeting by audio link.**

Update on re-opening of the Community Centre

Wickersley Community Centre Association has a firm commitment to continue with the reopening of the Community Centre as a community facility for our village.

However, plans keep being thwarted by changes in government guidance. The Community Centre is classed as a multi-purpose facility, not educational nor sports classified, which means some of the guidance is not as clear or prescriptive as that for schools or sports centres. The current Government guidance for multi-purpose community buildings requires all groups to be assessed in terms of risk. The 'Rule of 6' also applies to further restrict activities which are considered to be recreation, leisure or social gatherings which make up the majority of our bookings. Subject to no further changes we are hoping to welcome back low risk groups during October.

Our Covid-secure plans for operating are now in place:- risk assessments completed, notices and hand sanitisers positioned, and the caretakers have done an excellent job in deep-cleaning, and decorating the building in preparation for welcoming everyone back. We are keeping all our regular hirers up to date with plans and welcome any enquiries from new users.

In the meantime, we are delighted that Winthrop has been able to temporarily re-locate its Cafe to the Community Centre. We know how much people have missed Winthrop! So – The Environmental Health Dept have registered Winthrop in its temporary location and Winthrop has undertaken all the requirements expected of a catering operation, including the Covid-19 safety requirements, and is looking forward to serving Festive Afternoon Teas with the occasional 'Pop-Up Cafes'!

Carol Lavell
Clerk to Wickersley Community Centre Association
and Parish Council



Wickersley Library

Wickersley Library reopened to the public on the 21st September, and we were so pleased to welcome you back! We have missed you all so much and it has been wonderful to see so many of you using the order and collect service that enabled us to once again provide you with books during the Summer.

This year has seen many changes to our daily lives and libraries are no exception. In order to keep our staff and customers safe, there is a temporary, reduced service with a reduction in opening hours and special measures in place.

On reopening our doors, the following reduced services are offered:

- Basic return and issuing of books. Please use the self-service library units for issuing loans where these are available.
- Limited public computer access. PC use is by pre-booked appointment and are in two-hour sessions.

Unfortunately, the following services will continue to be suspended:

- Events and activities
- Newspapers
- Printing/photocopying
- Payments
- One to one digital support
- Customer service functions

The following customer guidelines will also be in place:

- Wear a face covering at all times, unless you are aged 11 and under or have a medical exemption
- Only access the library when you are advised to do so by a member of staff – there are currently limited numbers allowed into the library at any one time
- Complete the track and trace form when entering the library
- Use the public hand sanitiser points at the entrance
- Observe the social distancing measures whilst queuing and browsing the library

While we understand that your library experience may feel very different to what you've been used to, we hope that with the continued support of our fantastic customers, we can safely navigate this "new normal" together.

Gemma Smith

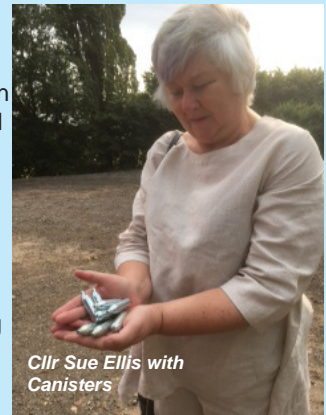
Anti-Social Behaviour in Wickersley

Wickersley Parish Council has received a number of complaints from residents about anti-social behaviour over recent months. This behaviour has included noise disturbances, vandalism to newly installed play equipment and, more seriously, drug-related issues.

The council is saddened that this sort of behaviour is happening around Wickersley and know how upsetting it is for residents. The council is in regular contact with South Yorkshire Police and informs them of residents' concerns so that they can take a proactive role in prevention. However, it is important that residents report all incidents to the police as soon as possible. For non-emergencies the number to call is 101 or details can be provided on www.police.uk

New signs are going up across the Rotherham area about the dangers of nitrous oxide, also known as laughing gas. Inhalation of the gas can be very dangerous, particularly when mixed with alcohol or other drugs. It is also an offence to supply nitrous oxide for its psychoactive effect. Alongside the dangers to users of the drug, there is also an issue with the litter caused by discarded canisters and the risk this poses to animals and the environment. Reports of discarded canisters can be made anonymously to Crimestoppers on 0800 555 111.

Support is available for users of nitrous oxide by calling 01709 917651, emailing divert@cgl.org.uk. Confidential advice is also available at Talk To Frank via phone on 0300 123 6600 or by visiting their website at www.talktofrank.com.



Cllr Sue Ellis with Canisters

Wickersley Parish Council Working in Partnership With



South Yorkshire

POLICE

Licensed Premises in Wickersley

Earlier this year, Rotherham Metropolitan Borough Council (RMBC) reviewed its Statement of Licensing Policy under section 5 of the Licensing Act 2003.

Local Authorities have responsibility for issuing premises licenses in accordance with the objectives of;

- the prevention of crime and disorder
- public safety
- the prevention of public nuisance
- the protection of children from harm

As part of the review, RMBC consulted with Wickersley Parish Council and local residents, and took into account statistics from police, ambulance service, environmental health and public health. Based on this information, RMBC decided that the whole of Wickersley should be covered by a Cumulative Impact Policy, stating that the granting of additional licenses was unlikely to meet some of the objectives above.

Although the policy has been introduced to protect residents from the cumulative impact of additional licensed premises, RMBC has recently granted a licence to Season's Restaurant which will be on Bawtry Road, near the Olive Lounge.

Wickersley Parish Council objected to the granting of this licence and has lodged an appeal with the Magistrates' Court because it will allow alcohol to be served inside and outside the premises, possibly causing disturbance and nuisance to local residents. A date for the appeal has not yet been set.

Wickersley's Neighbourhood Plan will also include a policy to restrict further drinking establishments because local residents highlighted their concerns in a survey conducted to help develop the plan. Local residents will have further opportunity to comment on this, and other planning policies,



when the draft plan is published later this year for consultation.

Please note that there has been a recent change to Planning Legislation which means that any controls over additional restaurants in Wickersley can only be exercised through the licensing route. Planning applications will still be required for change of premises use from shops or offices to drinking establishments.

Wickersley Parish Council will continue to monitor planning and licensing applications made to RMBC and make comment or lodge objections where appropriate. Details can be found on the planning pages of the new website, but individual objections from residents are encouraged as they count equally as the parish council's objections.

Councillor Maggie Godfrey

WINTHROP GARDENS

Winthrop Gardens closed to the public at the start of 'Lockdown' and has remained closed. It is not anticipated that Winthrop will re-open to the public until 2021. However - our Gardens are looking lovely thanks to our Gardening volunteers who have continued to work in small teams to safeguard and tend them.

While Winthrop has been closed to the public we've worked hard to stay in touch with all our supporters, customers and friends through the @Winthrop-Gardens Facebook page and through our regular Winthrop e-newsletters!

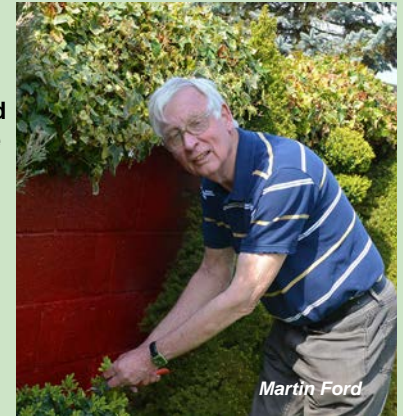
And, we're delighted to be able to announce that our Café Volunteers will be offering our renowned 'Festive Afternoon Teas' at the Wickersley Community Centre. We're very aware how much people have missed the opportunity to visit Winthrop and enjoy the friendship and camaraderie to be found there and that's needed now more than ever. So, with all our fingers and toes crossed we look forward to seeing old friends and new in November and December at our Festive Teas.

Cllr Sue Ellis, Chair of Winthrop Gardens Committee

Martin Ford has been the Head Volunteer Gardener at Winthrop since February 2016 when the Parish Council purchased and took over the running of Winthrop. He approached Sue Ellis offering his services and his arrival was akin to the answer to a prayer! Martin had a professional background as an 'all round horticulturalist' and our Gardens have flourished and thrived under his leadership and we've hugely appreciated his expert knowledge and the benefit of his years of experience. However, Martin will be leaving Wickersley within the next few months to live on the other side of the Pennines nearer to his daughter. We will miss him greatly although he has promised to be on the end of a phone or e-mail!! He'll also be greatly missed by the attendees of the very popular U3A Gardening group which he ran at Winthrop.

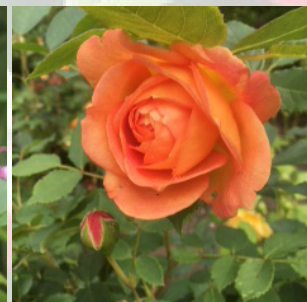
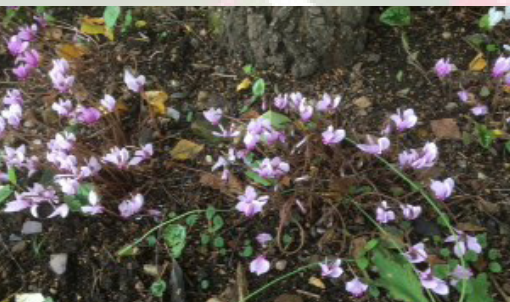
Thank you Martin for absolutely everything!

So - we are looking for someone with a similar background to Martin and ideally with particular experience of nursery work and plant propagation to take on the role of Head Volunteer Gardener. Anyone interested should contact Anna Chester, Winthrop Organiser 07397 039226 or winthropgardens1@gmail.com



Martin Ford

Everything in the Garden is looking quite lovely



Doorstep delivery of Vintage Afternoon Teas - in a box!!

These have proved really popular as treats and gifts for birthdays and other celebrations! Many people have told us how much they have appreciated enjoying 'a little bit of Winthrop' in their own homes and gardens!

Vintage Afternoon Tea (in a box) can be ordered by calling 07397 039226 or by emailing winthropgardens1@gmail.com We need a minimum of 7 days notice and payment is by BACS transfer to avoid handing cash. Afternoon Tea in a Box is £10 per person, including delivery



Winthrop Gardens Café Volunteer Team are delighted to be able to offer 'Festive Afternoon Teas' at the Wickersley Community Centre on the following dates:

Tuesday 17th November and Thursday 19th November
Tuesday 24th November and Thursday 26th November
Tuesday 1st December and Thursday 3rd December
Tuesday 8th December and Thursday 10th December
Tuesday 15th December and Thursday 17th December

Guests should arrive from 12.45pm, Teas will be served from 1.15pm or as soon as all guests have arrived, and the event will finish at 3pm
Festive Afternoon Teas must be pre-booked and paid for in full in advance to confirm the booking. Guests will be seated at pre-allocated tables, prior to booking we will send all enquirers our **EVENT INFORMATION SHEET** which outlines all the arrangements, in particular the measures we have taken to mitigate the risk of Covid-19.
Cost £15.00 per person

Wickersley Parish Council led the local community in decorating the main roundabout in the village in rainbow colours to show its gratitude and appreciation of everything that NHS staff and Key Workers have and continue to do in the Covid-19 emergency.

Said Cllr Sue Ellis, Chair of the Wickersley Parish Council *"Everyone in Wickersley has been hugely grateful for the work of NHS staff and key workers in our community throughout this pandemic. We wanted to find a communal way of displaying our appreciation and were so pleased with the enthusiasm in creating the 'Rainbow Roundabout', our community 'Thank You'. The personal mementoes and tributes were particularly poignant"*



Over 100 people worked in our three doctors surgeries and pharmacies throughout the pandemic



100 people in our two primary schools – St Albans and Northfield Lane – kept the schools open for the children of other key workers



Everyone appreciated the work of the 'Wickersley Bin Men' – 10 lorries

Cllr Sue Ellis continued *"Our new Parish Facebook page helped us to spread the word and get everyone involved. I've been told many times how much people enjoyed seeing the 'colour' of the roundabout develop on a daily basis as people brought along their 'railing toppers', their pom-poms, ribbons, rainbows and other, often very personal, tributes. It's a very big roundabout with lots of railings but everyone did an amazing job as they brought their own 'Thank You's'.*



Said Nicky Clews *"I'm a dialysis ward manager and did my 5k run past the roundabout this morning. It looks very beautiful and made me feel very emotional. Well done everyone, what a tremendous community we live in!"*



Wickersley Covid-19 Heroes

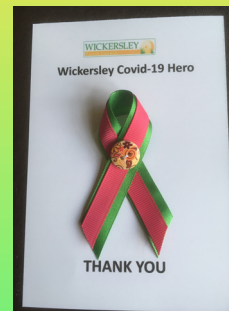
The ribbons pom-poms, rainbows and other tributes were taken down from the Rainbow Roundabout. They have been used to make 'Thank You' Certificates and Individual 'Tokens of Thanks' for Wickersley's Covid-19 heroes and the rest will go on display in the Wickersley Community Centre for everyone to see.

Said Cllr Sue Ellis, Chair of Wickersley Parish Council, "The people of Wickersley, and certainly the children of Wickersley, really took our idea of the Rainbow Roundabout to their hearts and did a fabulous job. I'm really pleased that, with the help of local volunteers, we've been able to turn some of these ribbons into lasting mementoes to show our gratitude to all the key workers who have served and continue to serve the people of Wickersley so steadfastly during this emergency. I've been out distributing these tokens over the last few weeks to those working in our surgeries and health centres, pharmacies, shops, foodbanks, funeral services and local Post Office. And I've also been catching up with our Wickersley bin men, posties and milkmen. It's been humbling to hear some of their Covid-19 stories and learn more about the difficulties and challenges they have faced during this emergency. I know the people of Wickersley have really appreciated their care and service to us."

ies and



ries every Friday morning!!



'We've also created a display of the pom-poms, rainbows and personal tributes in the Community Centre. We also appreciate that there may be Covid Heroes we've not yet caught up with or who we met after we went to print - so please let us know as we still have a few individual 'Tokens of Appreciation' left!!



Says Mum, Jules Colley, "My girls Amy and Nicole have been busy making pom-poms all week and are really are enjoying decorating the roundabout. I'm a Key Worker, working with patients in their own homes, and my girls know the impact Covid-19 has had on people's lives and on my workload! So, our hearts are very much in this fantastic project!"



Nearly 400 Individual tokens have been given out to Wickersley's Covid-19 heroes

HELPFUL HINTS FOR A HAPPY HALLOWEEN AT HOME

While Halloween will be very different this year, that's no reason not to have a great time and enjoy a 'Happy Halloween at Home'!

We hope these 'Helpful Hints' might give you a few ideas – follow our Facebook page (@Wickersley Parish Council!) where there will be more hints and tips in the run up to 31st October! And if anyone in your house is dressing up we'd just love to see photos of 'scary people' so please share them on our Facebook page!

PUMPKIN CARVING TIPS

1. Choose a large pumpkin and using a sharp serrated knife carefully cut off the crown / top of the pumpkin.
2. Using a large serving spoon, scoop out the seeds and fibres and discard. Then remove some of the flesh to create a well inside for the tea light you'll pop in later!
3. With a marker pen, draw the outline of the face or image on your pumpkin. Use a small serrated knife to cut out the features of the face or image you're carving. Always cut away from you in case the knife slips!
4. Pop a tea light inside the pumpkin, light it and replace the top / crown.



PARKIN

One of our great Yorkshire traditions. This is an old and well used favourite recipe from the kitchen of Mrs Joyce Beighton!

INGREDIENTS

4oz Oatmeal
4oz Self Raising Flour
2 level teaspoons of Ground Ginger
2 level teaspoons of Ground Cinnamon
¼ teaspoon of salt
2 large eggs
4 tablespoons milk
4oz Margarine
4oz Dark Brown Sugar
4oz Black treacle

METHOD

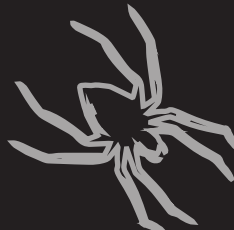
1. Set the oven at 160 degrees C / fan 150 degrees C
2. Sieve all the dry ingredients into a large bowl (Oatmeal, SR Flour, Ginger, Cinnamon and Salt)
3. Beat the eggs into the milk
4. In a pan melt the margarine, sugar and treacle
5. Add the melted ingredients and the beaten eggs and milk to the dry ingredients
6. Mix well and pour into a lined and greased tin
7. Bake at 160/ 150 for 1 hour and 20 mins

HALLOWEEN FUN AND GAMES

Apple Bobbing

Bobbing for apples is a fond childhood memory for many parents, so why not introduce it to your family if you haven't already made it an annual tradition. Just fill a big witch's cauldron (a clean bucket will work too) with cold water - maybe a little jelly-slime and some sweets for added disgustingness - and drop in lots of apples. Taking turns, each 'bobber' gets 30 seconds to remove as many apples as they can from the water using only their mouth/teeth. The winner is the one who grabs the most Granny Smiths, collects the most Cox's or bobs the most Braeburns.

Tip: Pop a towel underneath and around the bucket to protect your floors, with extra ones for the contestants.



Spooky Spoons

This one is probably better for older kids and grown-ups. See who can move the most bat droppings (raisins, of course) from one bowl to another using only a spoon in their mouth. Use chocolate chips if you prefer and use straws to suck them up as you move them instead of spoons.

Mummy Bandages

You'll need to split into equal teams or partners for this one. For each round, one member of the team will become the mummy and needs to stand still with their arms out in front of them. The rules are scarily simple - start a countdown, and on '1', the teams get a minute to wrap their mummy's entire body with white loo roll. The winner is the best-looking mummy after time runs out.



Halloween Quiz

1. What is a group of witches called? A caravan , a coven or a clowder
2. What is the traditional name for a pumpkin with a face carved into it, when it is illuminated from within by a candle?
3. Who sang the 1962 song 'Monster Mash'?
4. Where do real vampire bats live?
5. Who wrote the 1897 gothic horror novel "Dracula"?
6. 'Lambs Wool' was once a popular Hallowe'en drink made of milk and crushed, roasted . . . what?
7. To protect yourself from evil on Hallowe'en, what common kitchen ingredient would you carry in your pocket?
8. From which Shakespeare play do these words come "Double, double toil and trouble; Fire burn and cauldron bubble."
9. Which supposed 16th Century witch was born in a cave in Knaresborough, Yorkshire?
10. Which vegetable drink is a favourite of the students of Hogwart's School of Witchcraft and Wizardry?

Garden Scarecrow Challenge

Join in the fun and make YOUR Scarecrow!!

Collect your bundle of straw from the Wickersley Park Car Park, Warren Road, Wickersley, Rotherham, S66 2NY

On Sat 24th October, Sunday 25th October and Monday 26th October between 11am and 1pm

Bring a bag for your straw and let the fun begin!!

And - if your Scarecrow is visible as people walk past your house then everyone can appreciate your efforts!!

Wickersley Allotments & Garden Society

Wickersley Allotments and Garden Society (WAGS) is situated on Second Lane, just past Winthrop Gardens. We have 32 plots of varying sizes, all of which are currently occupied.

We have a small waiting list and anyone wishing to give it a go and join our Society, can go on the waiting list by getting in touch with me on 01709 542312, or email me, guymorthen@hotmail.co.uk

You DON'T have to have any experience to join us, just real enthusiasm and a bit of passion to putting some effort in and growing your own fruit and veg. Once you try it, trust me, you'll be hooked on the simple pleasures and great satisfaction of growing and eating your own produce.

We have many members who will only be too glad to give tips and advice along the way. We are an open, friendly and welcoming bunch, from all walks of life. We are not male exclusive, and are proud to have many female plot holders as members of our Society.

It goes without saying that to have a plot allocated to you, you will be taking over a plot that someone has given up.

It is on that note that I sadly announce that Mr Jim Gunn our Secretary has retired (at the age of 85!!) from his role and decided to, in his words, "give up his plot so that others can enjoy its pleasures"

Guy Cunningham Deputy Secretary WAGS.

Jim Gunn

Jim was our Secretary of many years and one of the founding members of the Society from back in the day when not that many people shared his passion for allotments! He, and a handful of others, worked several plots to attract other members.

In addition to being the Secretary of our society, he was an active and well-respected participant at local, Regional and National level with the National Society of Allotment and Leisure Gardeners receiving official recognition for his efforts in 2014 from the whole of the Yorkshire Region)

Jim has forgotten more about gardening and allotment growing than many of us will ever know. His advice and support were always freely given and welcomed. One of his great pleasures was to see the Wickersley Allotment and Gardeners Society flourish and expand from being a handful of members to what it is today a thriving and welcoming place enjoyed by many.

So, Jim, on behalf of all members of our Society, both past, present and future, please accept our grateful thanks for all your efforts and friendship. You are very much missed and always welcome, to our allotments.



Wickersley Methodist Church

“Come, let us return to the LORD.” Hosea 5.1

After almost six months Wickersley Methodist opened its door to worship. It was a wonderful experience with two half hour services. Each called a ‘One Service’ as it contained just one of everything you would expect in a typical Methodist service. It was so refreshing to meet up with friends (at a distance and wearing a face covering) to listen to God’s word, pray together and be blessed by sharing our stories. Sadly there was no singing of those traditional Wesley hymns, but the service drew to a close as we listened to a recording of that amazing hymn ‘Love divine all loves excelling’.

The service was led by Pastor Wayne Ashton who reminded the congregation that we were not ‘coming back to church, but coming forward’ to meet with God in a new and exciting way. Please come and join us at one of our Sunday services 10.00am to 10.30am or 11.00am to 11.30am. We would love to see you.



Every blessing, *Pastor Wayne and members of Wickersley Methodist Church.*

St Alban’s Wickersley

Thank God for the Harvest

I met with a couple recently to arrange their wedding for Summer 2021. Hopefully by then the Covid19 restrictions on weddings will have been lifted and the couple will be able to celebrate their marriage in the way that they want. The groom-to-be is a farmworker, who was pleased to announce that he and his colleagues had brought in their harvest of wheat, barley, and rape. I was able to add that I had finished harvesting the apples from the tree in the rectory garden; an annual event that never ceases to amaze me since I inherited the tree and do nothing to make the apples grow. As Christians the farmworker and I agreed ‘The land has yielded its harvest; God, our God has blessed us. (Psalm 67: 6).

Our individual harvests contribute to the wealth of food in our world. There is more than enough for everyone. However, hunger is the constant companion of millions of people throughout the world. Even in our own community hunger casts its shadow: families on low incomes and those whose benefits have been disrupted, are prone to having to miss one too many meals. Which is why the work of the Rotherham Foodbank and its distribution of food to families and individuals in crisis is so important.



It is right to give thanks for the harvest. St Alban’s Harvest Thanksgiving Service held on Sunday 4th October is available online

www.youtube.com/channel/UC8ChFp1f4DhdIfvukTc6ufA

A practical way of thanking the Lord of the Harvest is to make a food or financial donation to the Rotherham Foodbank. They can be reached via [rotherham.foodbank.org.uk](https://www.rotherham.foodbank.org.uk). Thank you.

Peter Hughes

Blessed Trinity

At long last, the “Lockdown” has been eased and the Catholic Church on Northfield Lane has reopened with, of course, restrictions to make its use as safe as possible.

There is a mass on Sundays at 9.30am for which you have to book and Wednesday mornings at 10am, which there is no need to reserve a place.

For details of how to reserve a place on Sunday morning, please refer to the parish web site. <https://www.blessedtrinitywickersley.org/> If you prefer then simply enter “Blessed Trinity Wickersley” in your browser’s search box.

Fr Richard Gomersall



The churches will be leading Remembrance Day tributes in November, and Wickersley Parish Council will be supporting them.



Woodland Committee

I took over as Chair of the committee in March 2020 and the handover and role have been significantly affected by the COVID-19 situation. However, work has continued behind the scenes and there have been various issues specifically relating to the Wood in particular which have needed attention during this time. Given the situation, people have been utilising local resources much more regularly and this has been evident in the Wood and Gorse as people have taken exercise and generally had an opportunity to appreciate the local area. The Wood and Gorse are amenities open to all members of our community and over this period all age groups have been taking advantage of these areas. This has generally been without difficulty, though there have been some concerns over small 'campfires' being set and the obvious dangers that this can cause, alongside queries over the use of motorbikes and other activities in the Woods in particular. It is our view that all are welcome to enjoy the woodland and the gorse but there does need to be some understanding that we all have individual needs and will use the areas differently. However, we are constantly monitoring the situation and we are now looking into some additional signage noting those activities that are prohibited.



In addition, the maintenance and upkeep of the area has been ongoing, particularly with reference to damage caused by unseasonal strong winds and other natural factors. Safety is a priority, and all potentially dangerous situations such as dangerous, hanging branches, are assessed and addressed as soon as possible. Please continue to report any such issues to the Parish Council via e-mail or telephone 01709 703270 and we will deal with them as soon as possible

We are now beginning to restart some of the other projects that have been suspended and we are currently looking at commissioning additional sculptures for placement in the Woods. Watch this space.

Cllr. Mark Scott

Environment Committee



As most of us have had to spend the spring and summer closer to home this year, the Environment Committee has done its best to make the village more interesting, colourful and attractive in order that our residents can enjoy their daily walks. Many of you will have admired the hanging baskets around the village and we hope that you also spotted the 21 new baskets that have been installed on the street lamps on Morthen Road and Northfield Lane. We appreciate the hard work that our garden contractor and his team have put in to keep the baskets watered and looking splendid throughout the season. Most of the flower beds are to be cut back and tidied up ready for the autumn and the tubs and railing planters are to be replanted.



As reported previously, we are continuing to replace more benches around the village, and it has been a pleasure to see them being used during the good weather. Keep your eyes open to spot the next bench that will be replaced before Christmas.

Because of nationwide restrictions, we have not been able to move forward with our plans to improve the area opposite the Co-op on the Tanyard, but rest assured once circumstances allow, we will.

After a long closure, the public toilets on the Tanyard reopened recently. Please follow the guidelines on notices for use of the facilities. The Environment Committee would also like to thank our handymen, John and Mick for keeping Wickersley so clean and litter free.

Cllr. Pat Beighton

USEFUL CONTACTS

Wickersley Parish Council	01709 703270	Adult Social Services	01709 822330
Rotherham Heroes	01709 807319	Rotherham Hospital	01709 820000
Sunnyside Community Centre Foodbank	01709 822465	NHS Advice Line	111
Morrison Doorstep Deliveries	0345 611 6111	Police (Non-Emergency)	101
Rotherham Borough Council	01709 382121	National Domestic Abuse Helpline	08082000249
www.rotherham.gov.uk/coronavirus		Gas Leaks	0800 111 999
Highway/Street Emergencies	01709 336003	Power Cuts	105
Council House Emergencies	01709 336009	Water Leaks Yorkshire Water	03451 242424
Children/Young People Social Services	01709 336080	Water Leaks Severn Trent	08007 834444

Wickersley Park – Phase One Redevelopment

At long last we have seen the completion of the first phase of improving the facilities at Wickersley Park. It has been long overdue but we now have a fit-for-purpose facility that can be enjoyed by a wider age range of children.

It must be frustrating for on-lookers to understand why developments take so long to achieve, why certain materials are used, layouts employed, and equipment types selected. The answer is quite simply “consultation”.

Very few people have experience of designing and specifying playgrounds and equipment, and keeping up with latest standards. Certainly, we have no one with this experience on the Parish Council. Therefore, a small sub committee was formed to oversee the park’s redevelopment.

This project is the result of much consultation with the Wickersley residents, with surveys conducted by Sheffield University Department of Architecture, consultants, contractors and particularly with children from our local schools.

It provides a significant upgrade and expansion to the play equipment area and included a complete removal of the previous play equipment. The new scheme not only broadens the range of activities, but also caters for a wider age range of children, with some more challenging equipment as well as incorporating equipment for the less able. More use has been made of natural materials in order to minimise the use of plastic. In addition, some of the equipment from the park has been relocated to Bob Mason’s Recreation Ground.

The Parish Council gave the green light to release funds for the project, supplemented by a small grant, early this year and a start date was agreed with the contractor. Unfortunately, within one week of this date, Covid-19 lockdown prevented the work from starting.

It has taken many hours of volunteers sitting in meetings, going the extra mile, and ensuring that village residents had the opportunity to guide the end result to achieve phase one. Now we look to phase two, where we have plans to improve the paths and planting, add lighting, incorporate a dog walk route track, and other features, when funds allow. If you have the staying power and patience, try your hand at being a parish councillor!

Cllr. Andrew Bates

